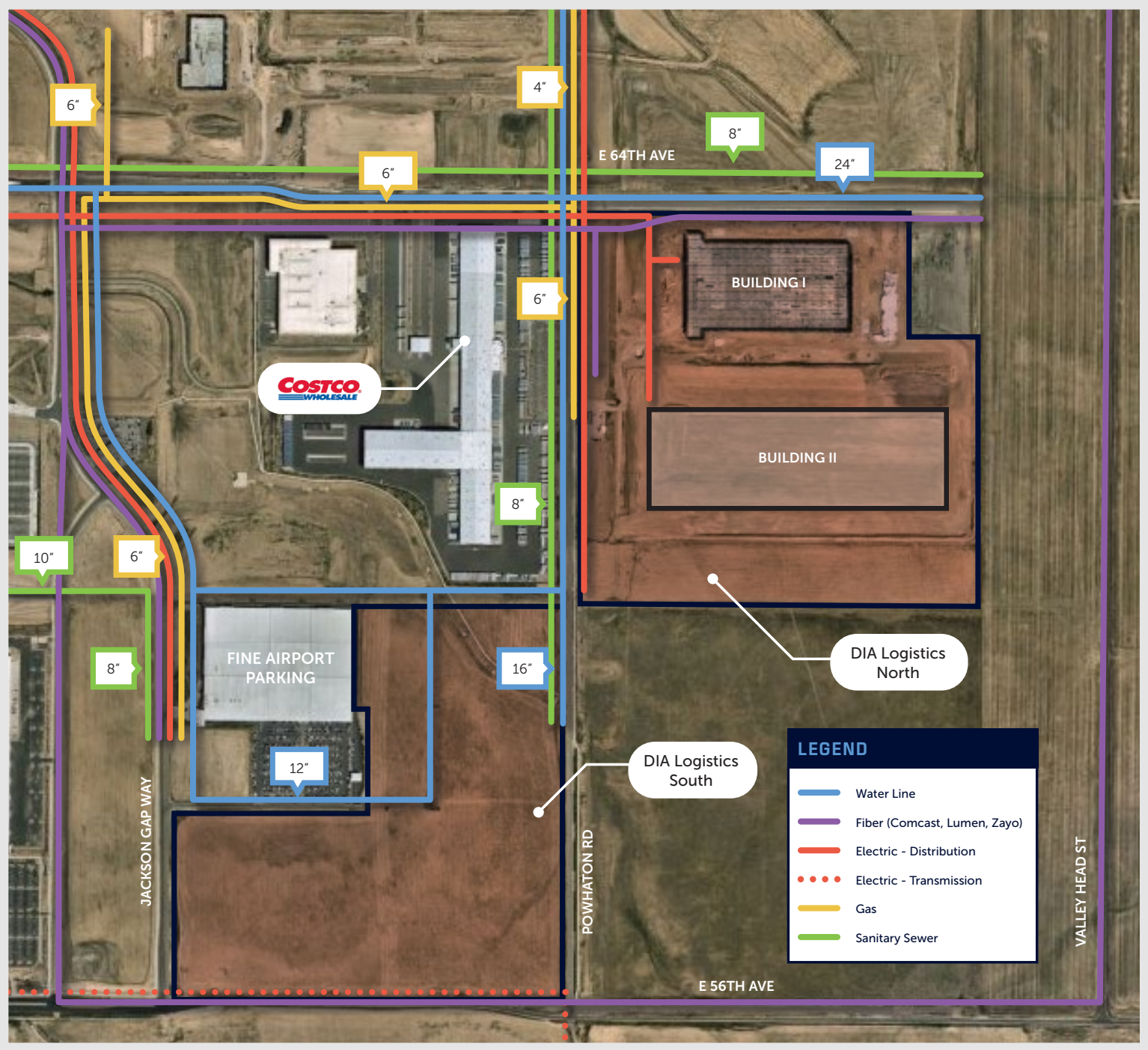
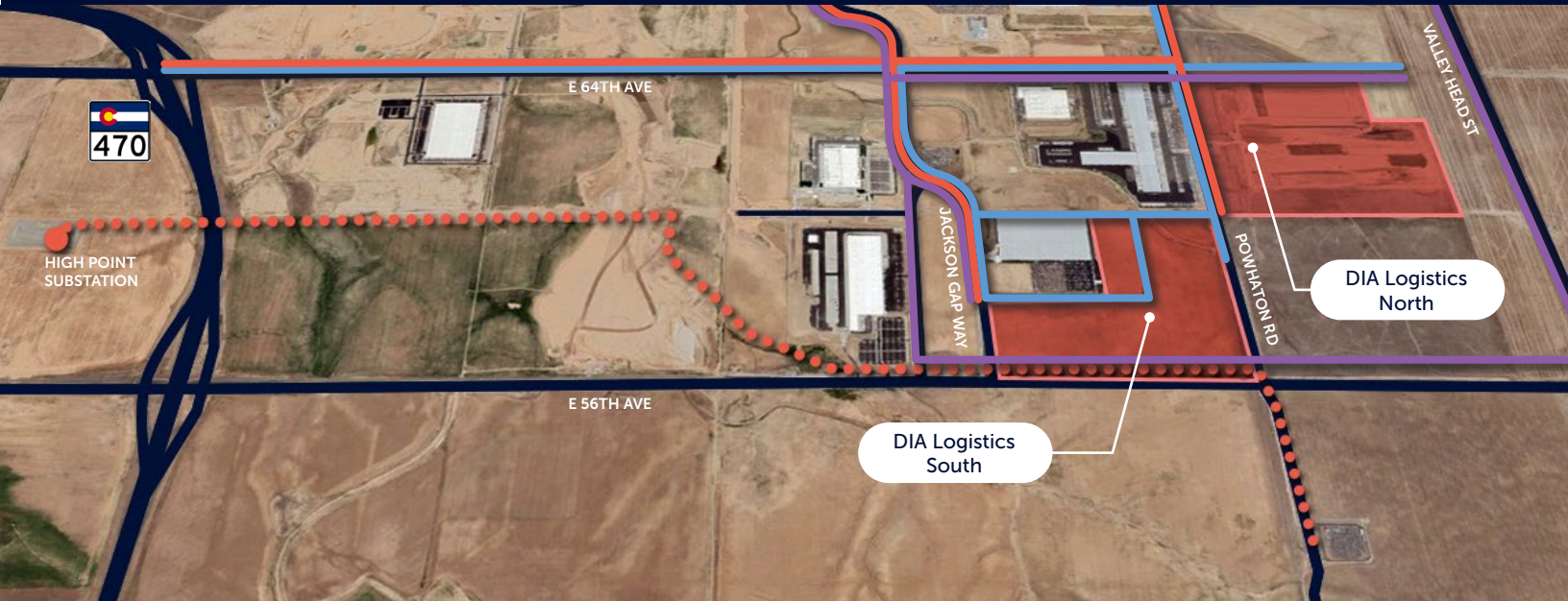


DIA Logistics Park

AURORA, COLORADO - UTILITIES MAP

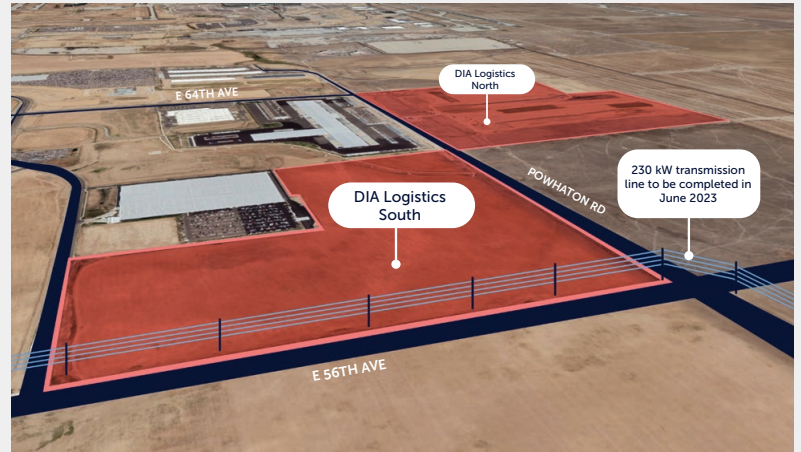


DIA Logistics Park Electric and Water Service Information



LEGEND

- Water
- Electric (Distribution)
- Electric (Transmission)
- Fiber



ELECTRICAL & WATER INFORMATION

	DIA Logistics North - Bldg I	DIA Logistics North - Bldg II	DIA Logistics South
Current Project Status:	Completion June 2023	Pad Ready	Entitlements
Building Size:	625,000 sf	1,028,000 sf	± 1,400,000 sf
Site Acreage:	± 45.9 acres	± 71.5 acres	± 108 acres
Electric Provider:	Xcel Energy	Xcel Energy	Xcel Energy
Current Power to Site:	13.2 kV with 4,000A at 480V, 3-phase	13.2 kV with 6,000A at 480V, 3-phase	TBD
Normal Distribution Service Available:	up to 15 MW		up to 15 MW
Future Transmission Service Available:	From 15 MW up to 200+ MW		
Substation Source:	Piccadilly / High Point	Piccadilly / High Point	High Point
Water Provider:	Aurora Water	Aurora Water	Aurora Water
Current Water Availability:	1,200 GPD/acre (55,000 GPD)	1,200 GPD/acre (85,000 GPD)	1,200 GPD/acre (130,000 GPD)
Future Water Availability:	Up to 300,000 GPD total through Aurora Water and higher in partnership with Denver Water		